

HLCC

Healthlab Control Center

Software Description - 1

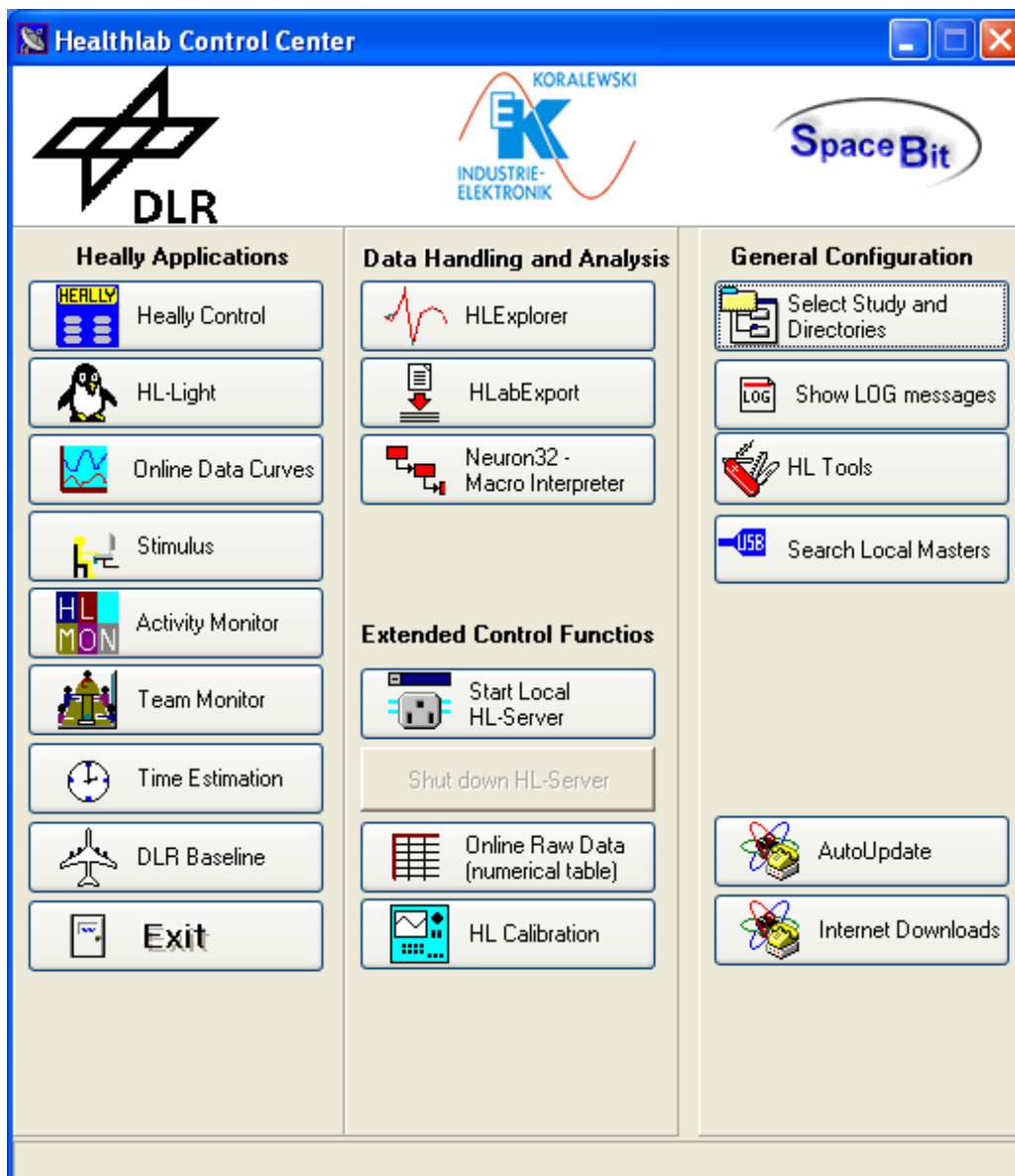
Date: March 2005

1 Index

1	Index	2
2	HLCC - Overview	3
2.1	Heally Applications	4
2.1.1	Heally Control	4
2.1.2	HL-Light	4
2.1.3	Online Data Curves.....	5
2.1.4	Stimulus	5
2.1.5	Activity Monitor	5
2.1.6	Team Monitor.....	5
2.1.7	Time Estimation	5
2.1.8	DLR Baseline	5
2.1.9	EXIT.....	5
2.2	Data Handling and Analysis.....	6
2.2.1	HLEplorer.....	6
2.2.2	HLabExport.....	6
2.2.3	Neuron32 – Macro Interpreter.....	6
2.3	Extended Control Functions.....	6
2.3.1	Start Local HL-Server	6
2.3.2	Shut down HL-Server.....	7
2.3.3	Online Raw Data (numerical table)	7
2.3.4	HL Calibration	7
2.4	General Configuration.....	7
2.4.1	Select Study and Directories.....	8
2.4.2	Show LOG messages.....	10
2.4.3	HL Tools	10
2.4.4	Search Local Masters	10
2.4.5	AutoUpdate.....	11
2.4.6	Internet Downloads.....	12
3	Appendix	13
3.1	Button bar of configuration dialog	13
3.2	Aufbau von Format-Strings	Fehler! Textmarke nicht definiert.

2 HLCC - Overview

Program *HLCC* (Healthlab Control Center) provides the user interface for investigations with Healthlab (Heally Applications). It also offers functions for *Data Handling and Analysis*, *Extended Control Functions* and *General Configurations*. In addition it supports software updates via Internet.



The following functions are realized:

- Selection of data directories
- Selection of study names
- Connection to Heally Master
- Download of program updates from internet/out of web?

Context Pop-Up Menu

A Context Pop-up menu may be opened by placing the cursor on the background of the dialog and a mouse click right.

It consists of the following functions:

Change Skin Toolbar

Changes the window into a toolbar, most important functions are shown as icons.

INI File Editor

Opens the dialog to produce Ini-files.

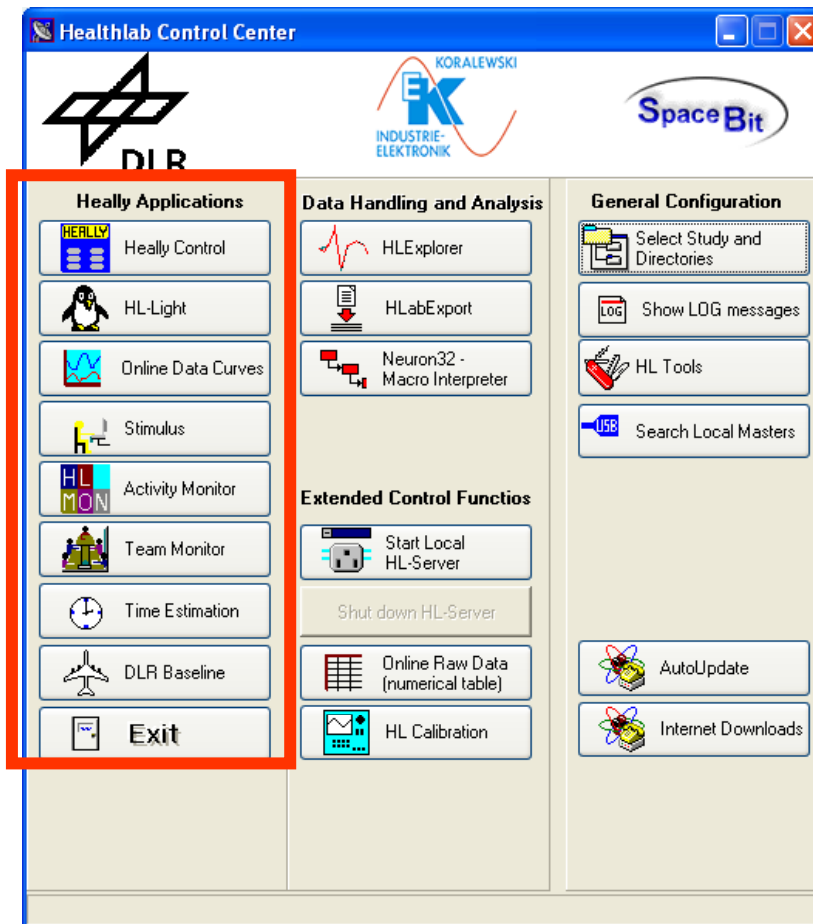
List of Program Versions

Shows all programs that are presently installed and ads each its version number.

About

Shows version number and date of creation of program HLCC.

2.1 Heally Applications



Buttons within this column start programs to perform measurements with the Heally System.

2.1.1 Heally Control

A click on this button starts the program *Heally.exe* (see separate description for Heally).

2.1.2 HL-Light

A click on this button starts the program *HL_Light.exe* (see separate description for HL-Light).

2.1.3 Online Data Curves

A click on this button starts the program *Demo_Online.exe*. With this program data may be shown directly online.

2.1.4 Stimulus

A click on this button starts the program *Stimulus.exe*, this program starts the basic measurement (see description for Basic Measurement).

2.1.5 Activity Monitor

A click on this button starts the program *HL_Monitor.exe*. This program starts a protocol steered measurement. The protocol runs on the PC (see description for HL-Monitor).

2.1.6 Team Monitor

A click on this button starts the program *Teammonitor.exe* for investigations of groups up to six person. It enables group investigations with a continuous connection to the PC or settings for group investigations in the field.

2.1.7 Time Estimation

A click on this button starts the program *TimeEstimation.exe* for the examinations “Time Estimation”.

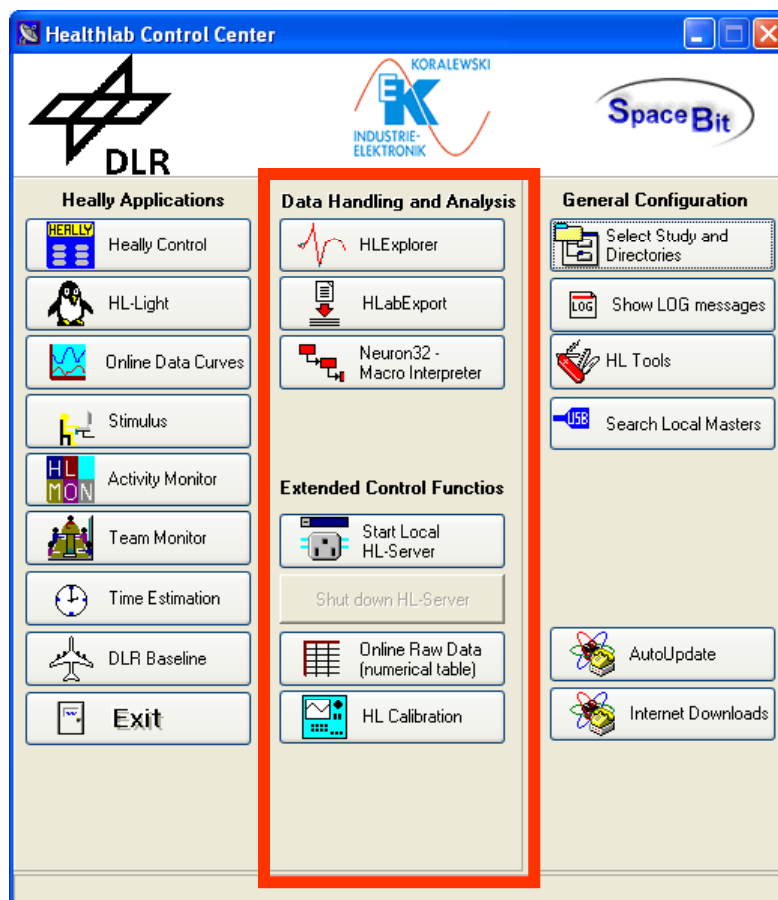
2.1.8 DLR Baseline

A click on this button starts the program *AOT_DLR.exe* which starts the basic examination (see description for Basic Measurement).

2.1.9 EXIT

A click on this button closes the program HLCC.

2.2 Data Handling and Analysis



Buttons within this column start programs to convert and analyse data.

2.2.1 HLEplorer

A click on this button starts the program *HLEplorer.exe*. Data that have been recorded with either the *Heally-System* may in this program be organized, monitored and analysed (see description for *HLEplorer*).

2.2.2 HLabExport

A click on this button starts the program *HLabExport.exe*. This program exports data from the internal Lab format into various other formats (see description for *HlabExport*).

2.2.3 Neuron32 – Macro Interpreter

A click on this button starts the program *N32_Macro.exe*. Specific evaluations may be configured and executed.

2.3 Extended Control Functions

The following programs enable specific adaptations – especially for system analysis.

2.3.1 Start Local HL-Server

A click on this button starts the program *HL_Server.exe*. It enables access from more than one PC to a Heally-System within networks.

2.3.2 Shut down HL-Server

A click on this button closes the server.

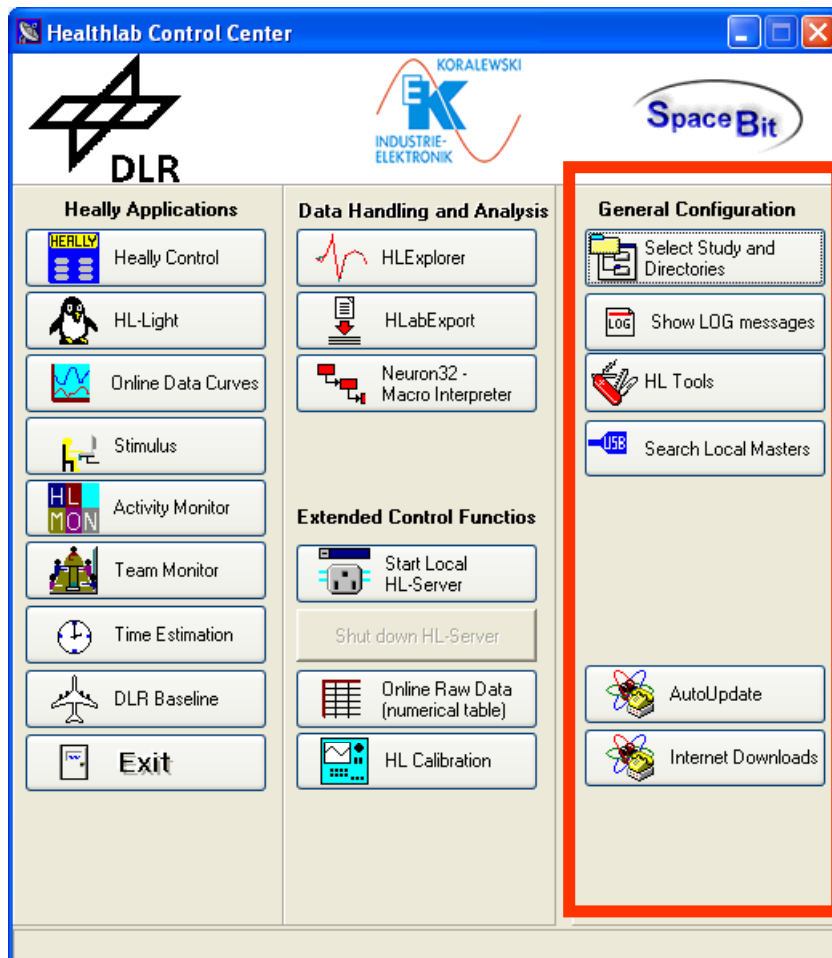
2.3.3 Online Raw Data (numerical table)

A click on this button starts the program *MasterOnlineData.exe*. After selecting a master, a table opens that shows the channel values that are currently send by the Master respectively their frequencies.

2.3.4 HL Calibration

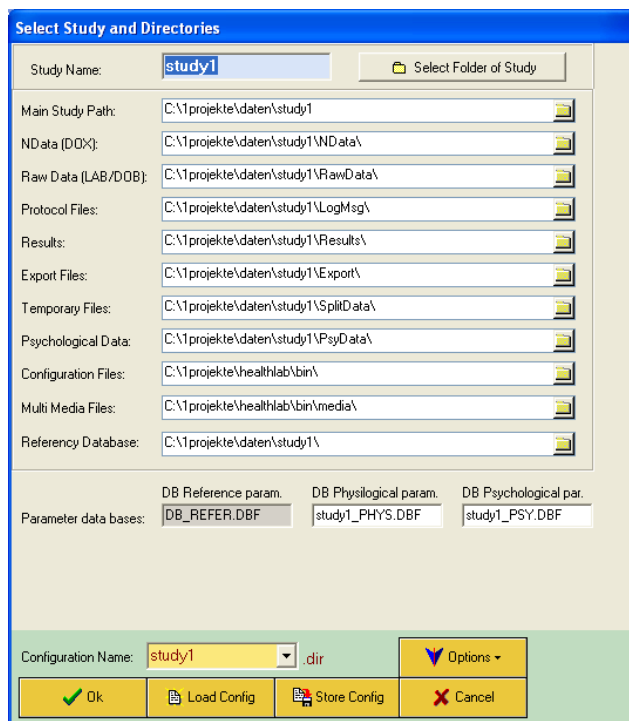
A click on this button starts the program *HLCaliber.exe* for operating and analysing the Heally-System.

2.4 General Configuration



2.4.1 Select Study and Directories

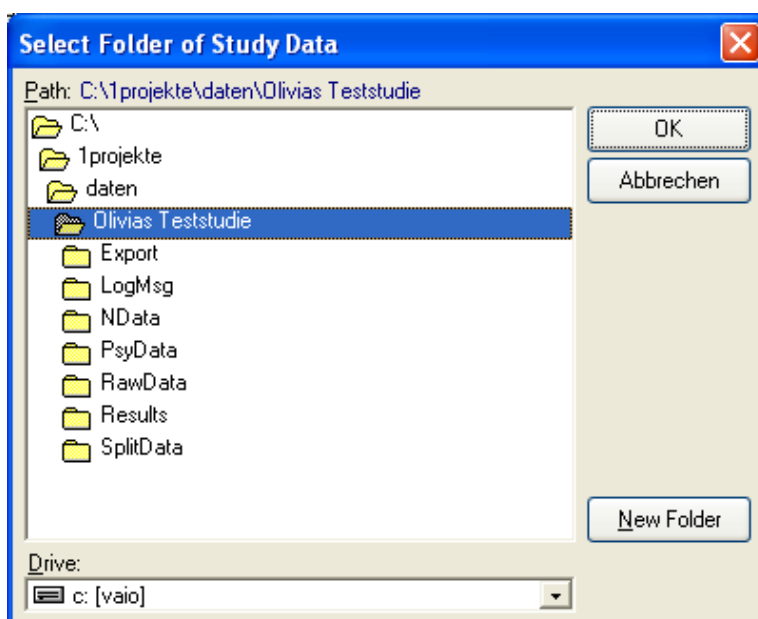
Investigation Data are sorted according to *studies*. Directories will be allocated to a study.



A click on the button *Select Study and Directories* opens the above dialog.

Select Folder of Study

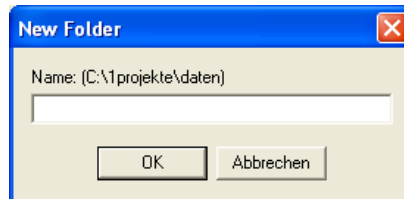
A click on the button *Select Folder of Study* opens the following dialog.



If the study does already exist, a study name may be chosen and confirmed with *OK*.
Caution: The confirmation with *OK* does immediately create subdirectories to the study chosen. Therefore please make sure, the right study name is chosen and its folder are opened.

New Folder

To create a new study, first choose the directory and open it with double click. A click on the button *New Folder* opens the following window.



Here it may be checked one more time whether the right directory is chosen. Now a new study name may be given and confirmed with *OK*. The window *Select folder of Study Data* may be closed with *OK*. **Caution:** This confirmation creates immediately subdirectories to the study chosen.

The study name chosen is shown at the top left marked. In case they do not already exist, the following subdirectories are created.

Main Study Path

Shows the present directory name of the study.

NData [Dox]

Shows the directory of Dox Files for the analysis.

Raw Data [LAB/DOB]

Shows the directory of raw data, that are created while recording or that are read from Heally Master (LAB files).

Protocol Files

Each program creates information about its process and stores them here. The name of the files are: *Xyymmdd.log* (year/month/day).

Results

Here the results of signal analysis are stored. (*HLEplorer* and *N32_Macro*).

Export Files

Contains files that were exported by certain functions in either *HLEplorer* or *HlabExport*.

Temporary Files

This directory contains system-internal temporary files.

Psychological Data

Data of psychological inquiries are saved in this directory.

Configuration Files

This directory contains configuration files. The program directory is chosen by default.

Caution: Changes of this directory may lead to a loss of present configurations.

Multi Media Files

Directory for media data with speech and video of base investigation.

Referency Database

Directory of reference database.

Parameter data bases

DB Reference par.

Name of reference database (may not be changed).

DB Physiological par.

Name of database of physiological parameter.

DB Psychological par.

Name of database of psychological parameter.

Note: For the description of the navigation buttons below please see 3.1.

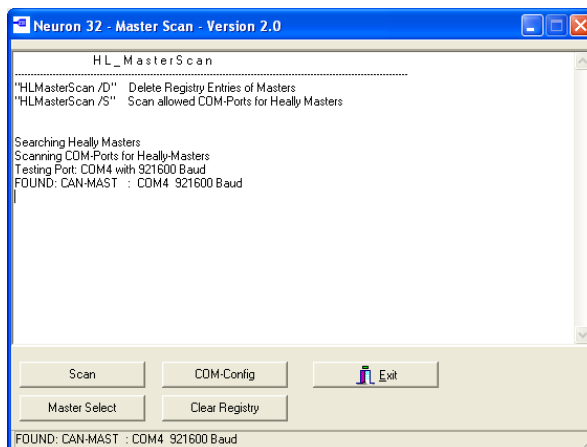
2.4.2 Show LOG messages

A click on this button opens a window in which program messages are shown.

2.4.3 HL Tools

Here you find help programs to read databases and edit text- and ini-files.

2.4.4 Search Local Masters



A click on the button *Search Local Masters* opens the above window.

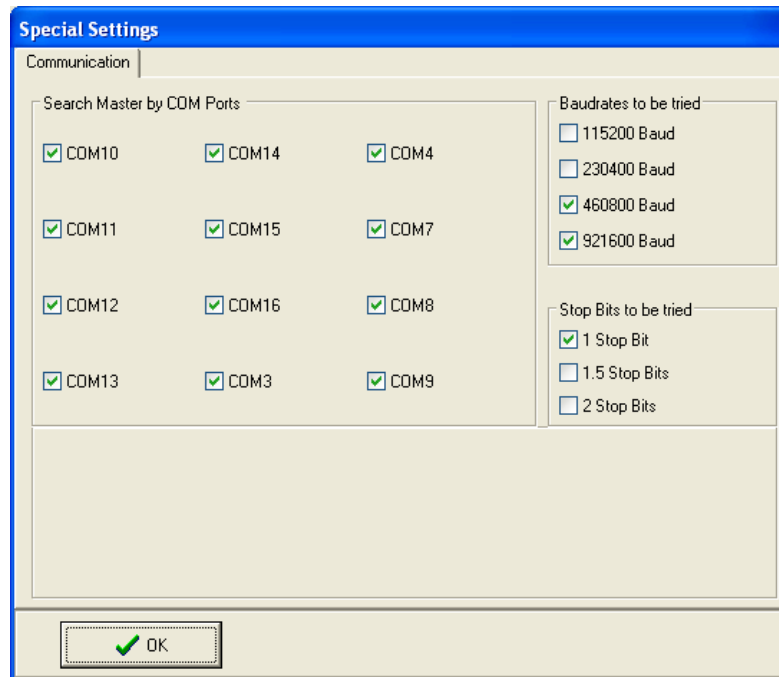
Scan

A click on the button *Scan* starts the search of Masters that are connected to the PC.

Master Select

A click on this button opens a window in which the desired Master may be selected.

COM-Config



A click on the button *COM-Config* opens the window *Special Settings*. Ports (Com..) may be selected with a checkmark. These ports are now checked for a master connection.

Master Search Baudrates

Selection of baudrate. The selection needs to be done accordingly to the Master's configuration. *Baudrate* for Bluetooth = 460800; *Baudrate* for USB-Chip Texas Instruments TUSB3410 = 230400. *Baudrate* for Signal Chip CP2101 = 921600.

Stop Bits to be tried

The number of stop bits may be chosen (default 1 bit).

Clear Registry

A click on the button deletes all Masters that are registered in the windows registry.

Exit

Closes the program.

2.4.5 AutoUpdate

This function is presently not available.

2.4.6 Internet Downloads

A click on this button opens a dialog that asks if a connection to the web should be started to download updates from the SpaceBit-Website. When confirmed by clicking on yes a window opens that asks for your user name and your password.

Note: Should you do not have these authorization yet you will receive them from SpaceBit GmbH. Please click on the SpaceBit Logo above in the dialog window HLCC to receive the contact information.

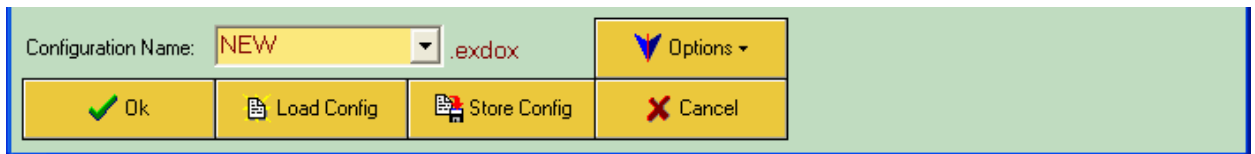
To download updates go to *Master*, *Satellites* and *Windows*.

Program descriptions are saved in the directory *documents*.

3 Appendix

3.1 Button bar of configuration dialog

In many dialogs individual settings may be created, saved and loaded (e. g. configuration of a plot). Therefore the buttons below are used.



Button bar

Configuration Name

Here a new name may be typed or an already existing one may be chosen. A new name may either be directly typed into the data field or may be chosen by opening the pull-down-menu *Options* → *New Config*.

Store Config

A click on this button stores the setting together with its name.

OK

A click on the button *OK* saves the setting and closes the dialog respectively a following action will be performed.

Load Config

If you wish to call an already existing setting, click on the arrow and select the name desired. A click on the button *Load Config* loads the setting shown in the data field *Configuration Name*. *Note: All configurations are in the file: zipHeally.zip.*

Options

The pull-down menu *Options* offers further options for selection:

New Config

Type a name to save the new selection.

Import Config

Opens the dialog *Import Configuration File* to import selections from an already existing external file.

Note: Each dialog is related to an individual file extension (e. g. .exdox).

Export Config

Opens the dialog *Export Configuration File* to save the selection in an external file.

Delete Config

Caution: Deletes the setting referring to the name shown in the data field *Configuration Name*.

Set Default Config

By activating this command the setting of the dialog is replaced by the standard selection (as far as it exists, otherwise an error message *Input File does not exist* appears).